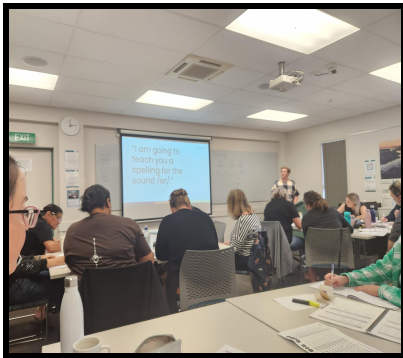
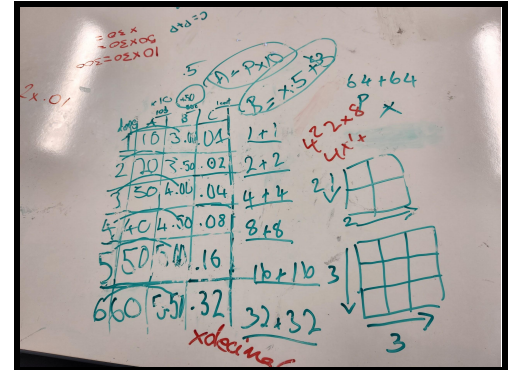




(Whiringa-a-Nuku , Wk 6, Term 4; 2023)

## Mauri Ora e te whanau

**Maths visit-** Last week we had our math guru Whaea Arahina in to mentor teachers in the classroom teaching Algebra-patterns and relationships. She was super excited to see the growth over time with collaborative groups, use of mathematical language and high level problem solving. It is a great time to celebrate our mathematical journey for both students and teachers. This picture shows the relationship across and down the table, students then develop an algebraic sentence eg  $P \times P = 4 =$



**Teacher only days** - Teachers attended a 'Code' course which looks at the scope and sequence of spelling patterns and rules and how to learn an effective way of delivering daily spelling lessons to children so that they retain what they learn.

Prize Giving practise is well underway. Our tamariki will be actively involved in various roles during prize giving. It is an awesome opportunity to celebrate the successes and achievements of our students. So please save the date **Thursday 14th December at 10am** and come along to enjoy this day together.

**Cluster Athletics is tomorrow Tuesday 14th November, starting at 9.45 and it should be finished by 2pm.** Students are aware of their events on the day. They will need lunch , a water bottle and black shorts.



Yr 5&6 Rippa Rugby- Our Mahoe magic team have been doing very well in their past two games of Rippa rugby. Tomorrow their game is at 4pm, Rex Morpeth park in Whakatane against Apanui Condors.



### Holden's 13th Birthday



### Dates to remember:

Tuesday 14th November: Cluster Athletics

School Trips to be confirmed - Week 7/8

Thursday 14th December: End of Year Prizegiving

Principal Award	Rongokahira Hakopa	<i>For persevering with her maths assessment.</i>
Values Award	Lionel Nevin	<i>For being a great helper and caring for others.</i>
Duffy Award	Chaza-Rae Ranui	<i>For being able to find complicated patterns and rules in algebra.</i>

**Whanaungatanga**

**Manaakitanga**

**Kaitiakitanga**

